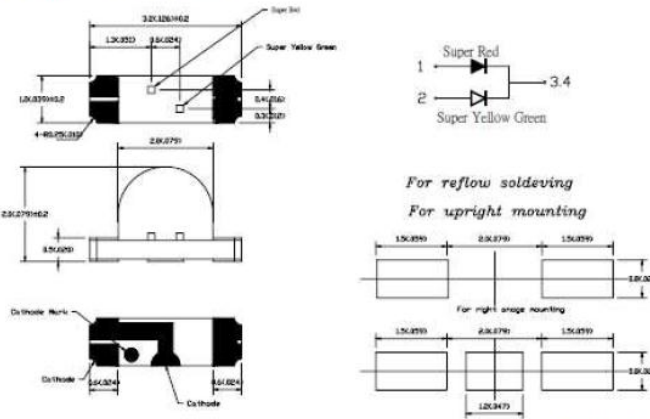


SML-120SURUG

Package Dimensions



- Notes:
1. All dimensions are in millimeters (inches).
  2. Tolerance is  $\pm 0.10\text{mm}(.004")$  unless otherwise noted.
  3. Protruded resin under flange is  $1.0\text{mm}(.04")$  max.
  4. Lead spacing is measured where the leads emerge from the package.
  5. Specifications are subject to change without notice.

Absolute Maximum Ratings at TA=25°C

Electrical / Optical Characteristics at TA=25°C

Parameter	Maximum Rating	Unit
DC Forward Current	30	mA
Power Dissipation	R	80
	G	100
	mW	
Pulse Current (1/10 Duty Cycle, 0.1ms Pulse Width)	100	mA
Reverse Voltage(V <sub>r</sub> )	5	V
Operating Temperature Range	-25°C to +80°C	
Storage Temperature Range	-30°C to +85°C	
Lead Soldering Temperature	230°C for 5 Seconds	

Parameter	Symbol	Min.	Typ.	Max.	Unit	Test Condition
Luminous Intensity	IV(R)	42	70		mcd	IF = 20mA
	IV(G)	28	50			
Viewing Angle	2θ 1/2		100		deg	IF = 20mA
Dominant Wavelength	λ d(R)	627		637	nm	IF = 20mA
	λ d(G)	566		576		
Forward Voltage	VF(R)		2.0	2.6	V	IF = 20mA
	VF(G)		2.0	2.6		
Reverse Current, any Dot	IR			100	μA	VR = 5V

TYPICAL ELECTRON-OPTICAL CHARACTERISTIC CURVES  
25°C Free Air Temperature Unless Otherwise Specified

